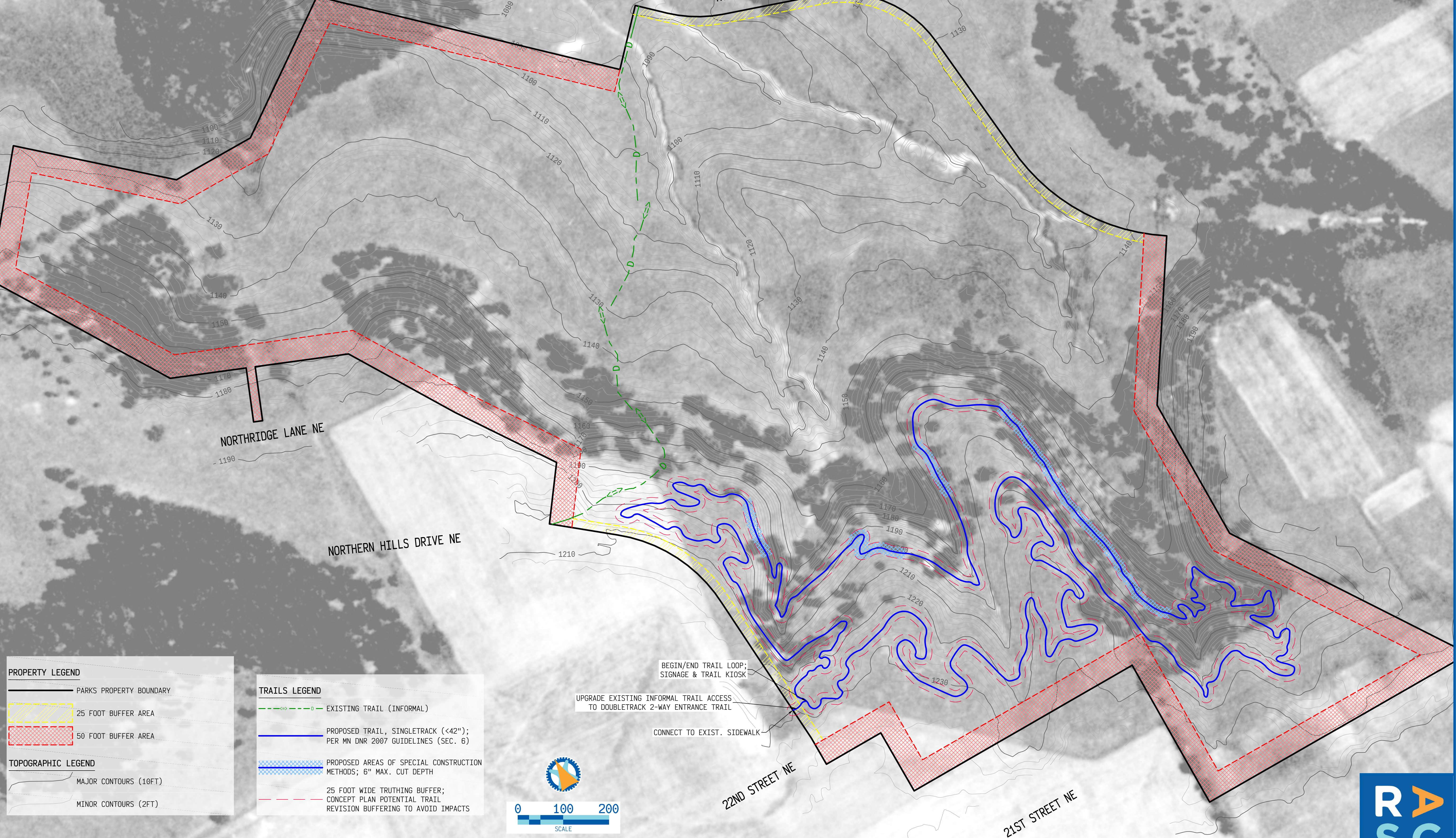


1940 AERIAL PHOTO FROM MINNESOTA HISTORICAL AERIAL PHOTOGRAPHS ONLINE

THE IMAGES WERE CAPTURED BY A VARIETY OF GOVERNMENT ENTITIES TO ADDRESS A WIDE RANGE OF APPLICATIONS. IMAGES WERE SCANNED AT RESOLUTIONS RANGING FROM 150 TO 1200DPI. THE COLLECTION INCLUDES A MIXTURE OF BLACK & WHITE, TRUE COLOR AND INFRARED PHOTOGRAPHS. VARIOUS IMAGE COLLECTS WERE TAKEN AT A RANGE OF FLIGHT HEIGHTS DEPENDING ON THE YEAR AND PURPOSE OF THE COLLECT.

(TEXT ABOVE FROM MINNESOTA GEOSPATIAL COMMONS DESCRIPTION.)



PROPERTY LEGEND

- PARKS PROPERTY BOUNDARY
- ▨ 25 FOOT BUFFER AREA
- ▨ 50 FOOT BUFFER AREA

TOPOGRAPHIC LEGEND

- MAJOR CONTOURS (10FT)
- MINOR CONTOURS (2FT)

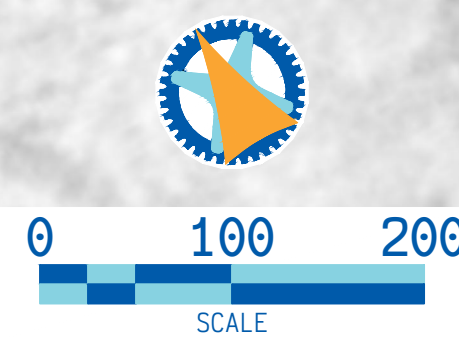
TRAILS LEGEND

- - - - - EXISTING TRAIL (INFORMAL)
- PROPOSED TRAIL, SINGLETRACK (<42"); PER MN DNR 2007 GUIDELINES (SEC. 6)
- ▨ PROPOSED AREAS OF SPECIAL CONSTRUCTION METHODS; 6" MAX. CUT DEPTH
- - - - - 25 FOOT WIDE TRUTHING BUFFER; CONCEPT PLAN POTENTIAL TRAIL REVISION BUFFERING TO AVOID IMPACTS

BEGIN/END TRAIL LOOP;
SIGNAGE & TRAIL KIOSK

UPGRADE EXISTING INFORMAL TRAIL ACCESS
TO DOUBLETRACK 2-WAY ENTRANCE TRAIL

CONNECT TO EXIST. SIDEWALK



CONCEPT PLAN OVERLAID ON 1940 AERIAL PHOTO

